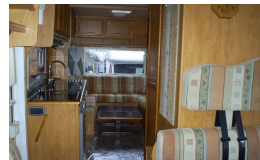


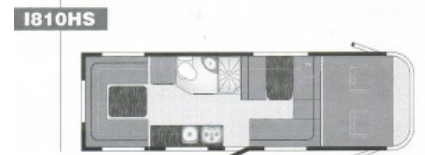
SOLD Eura Mobile Integra 810 (2002)



Overview

£28,995

EURA MOBILE INTEGRA 810 (2002)



An impressive A-class motorhome with a large 'U' shaped rear lounge with adjustable table. A central kitchen and washroom with separate shower. The front diner has 2 additional seat belts and a double bed lowers above front cab.



CALL 01568 611481
TO SPEAK TO OUR SALES
ADVISOR TODAY

The features found on the Integra 810 HS include:-twin rear axle, large storage space, Dometic B2100 air conditioning unit, Electrolux fridge, Smev 3 burner hob, Smev combi oven/grill, loose fit carpet, Trumatic warm air heating, cd/radio, water heater, Thetford C-200 cassette toilet, battery charger, Auto Sat system, Omnistore, VDO Ayton Sat NAV/reversing system, gas locker to take 2x6kg gas bottles, Tow bar, Fiamma door lock, 150L freshwater tank, 120L waste water tank,

Specifications

Engine	Fiat 2.8l JTD
MIRO	3870kg
Max. Authorised Weight	4500kg
Total Height	3.08m / 10'1"
Total Length	8.23m / 27'0"
Total Width	2.30m / 7'6"
Engine	Fiat Ducato 5 speed manual
Miles	60240
Year 1st registered	2002