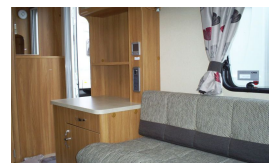


SOLD Swift Challenger 480 SE (2013)

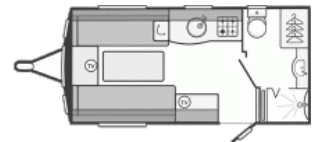


Overview

£18,499

Click the Swift logo for an interactive Tour

Price excludes a recommended dealer delivery charge of £545 (including VAT)



Swift Challenger 480 SE (2013)

- **Overview**

The all new Challenger SE range sets new standards in style, specification and weight in this market sector.

With weight savings of up to 128 kilograms over the previous models, the new models fall within a much larger range of towing vehicles.

Amazingly Swift designers have been able to massively increase the specification on top of these substantial reductions in weight. Top of the list of improvements is the Alde radiator central heating system, with touch screen controls, exclusive to Swift. A first in this market sector.

Other improvements include a 20 watt roof mounted solar panel, the latest 110 litre Dometic fridge with removable freezer compartment, new locker design and complementary fabrics. With six single axle and one twin axle model there is a layout "to suit every need.

- **Swift Plus Points**

You can be reassured when you buy a Swift Caravan that they all come with the following market leading features

- European Whole Vehicle Type Approval ensures compliance with strict weight, dimensions and safety regulations
- EN1645 Grade 3 classification for heating and thermal insulation
- 1.95m (6'5") headroom
- One-piece, 5000 Series marine grade aluminium sidewalls
- Higher tyre rating - a minimum of 150kg extra load margin at 130kph (law permitting)
- Shock absorbers for a smoother towing experience
- Step-on hitch cover for easy cleaning of front windows
- Gas regulator fitted with stainless steel braided hose for improved reliability
- High security entrance lock for peace of mind
- Aerial point in battery box for portable satellite dish connection
- Two TV stations with 230V, 12V and aerial sockets

- Bed make-up system with slats retained on track
 - Seat bases with spaceframe construction, full front access and space for larger items
 - Areas under beds and seats warmed by Alde radiator system
 - Front chest of drawers with convenient slide-out extending top
 - Large dining table (960mm x 600mm) for full-size place settings
 - Positive overhead locker catches for secure storage on the move
 - Dual fuel hob with 800W electric hotplate and 3 gas burners with electronic ignition
 - Ventilated microwave oven with digital controls built at an easily accessible level
 - High flow rate in-board pump with chrome finish brass taps for reliable, high performance water supply
 - Separate shower mixers with adjustable head positions
 - High impact, scratch resistant floor lino
 - Large capacity (15 litre) waste bin on lower door
 - Solar panel connection (**New** 20 Watt Solar panel as standard in SE range)
 - Panoramic front sunroof
 - **New** Thatcham approved tracker fitted as standard
- **Exterior**
 - **New** Exterior profile with Aerodynamic front in closed-mould GRP with wide front door
 - Full height moulded rear panel
 - Fully bonded roof for extra strength and flatness
 - Semi-recessed body colour awning rail both sides
 - Panoramic front sunroof
 - 2.25m (7' 4½") overall width for a more spacious interior
 - 25mm 'sandwich' side walls with HD polystyrene insulation core
 - 32mm 'sandwich' roof with HD polystyrene core
 - 44mm 'sandwich' floor with high rigidity Styrofoam core
 - Wheel arches insulated with high density foam to prevent cold spots in storage areas
 - **New** 'Challenger' exclusive design alloy wheels
 - Heavy duty corner steadies all round, lockable at rear

- BBQ point
- Exterior two part door with interior moulded liner window and blind (45mm (2") wider and 50mm (3") taller than standard size
- External access door under front nearside seat
- Large external access door under fixed beds (model specific)
- Exterior access battery box and mains electric inlet (battery not included)
- AL-KO galvanised steel chassis with Euro-Axle
- 44mm 'sandwich' floor with pre-treated plywood and Styrofoam insulation core
- AL-KO Euro overrun device with two-way assisted handbrake
- 13-pin 'Jaeger' 12V car connector
- Spare wheel (steel) and underslung carrier
- **New** LED awning light with key fob control
- Entrance step
- Door flyscreen with easy concertina action

• Interior

- 'Mali Acacia' woodgrain with rich colour and defined woodgrain texture with new complementary fabrics
- Overhead lockers with injection-moulded spaceframe construction and **new** re-styled furniture doors with cream infill and chrome effect handles
- Granite effect kitchen sink with larger integrated drainer and removable extension drainer
- **New** Additional lift up sink extension (not 530 & 625)
- Heki 2 Deluxe large tilting panoramic roof window with flynet and pleated blind
- Multi-position 'Mini-Heki' or 'Midi-Heki' clear roof light with flyscreen and blind in kitchens, bedrooms and washrooms
- Pleated blinds and fly nets to all windows
- **New** Removable wear resistant harewood quality carpet
- 'Ultra Comfort' luxury deep sprung bed mattress in fixed bed models
- Lined washroom cubicles in all separate washrooms
- Fixed beds with steel frames to maximise strength and storage space

- Hinged seat and bed tops for easy access
- **New** Access flaps in fixed bed surrounds and day seat ends
- Mattresses and seat cushions supported by beech slats for extra comfort
- Seat and backrest ventilation boards
- Two scatter cushions
- Twin curtain track for improved hanging and ease of use
- **New** Luxury curtains with double width fabric on all windows
- Food grade nylon chopping board with dedicated storage
- Slide-out storage rack
- **New** Second moulded cutlery drawer on smooth steel runner above fridge
- 32mm thick lightweight washroom door with metal domestic style handle
- **New** Washroom hanging rail
- **New** Fabric blinds to washroom window (model specific)

• Equipment

- **New** ALDE radiator central heating and water heating with daily programming with LCD touch screen control and choice of 1KW, 2KW or **new** 3KW setting
- **New** ALDE towel radiator in washroom (except 625)
- **New** 20 Watt Solar panel as standard
- Low energy lighting system throughout with ambient over-locker lights, LED task lights and **new** low level night lights
- **New** LED back-lit acrylic sink splash back and kitchen under worktop lighting
- **New** LED backlights in washroom mirrors
- LED down lighters set in plinth over kitchen locker
- **New** Light in wardrobe
- Six 230V sockets including two in compact front shelf pod 30 litre internal fresh water tank (Twin Axles Only) with additional external pump for filling or direct feed to taps
- External 230V mains socket
- User friendly 12V control panel with battery selection, battery state meter, lighting, water tank level (Twin Axle models) and water pump circuit controls set in new decorative housing
- **New** 8-Series Dometic 110 litre, electronic ignition fridge

with removable freezer compartment, black effect finish and digital controls

- Thermostatic oven and separate grill
- Glass hob lid with safety cut-out feature
- **New** Omnivent three speed, two way roof fan
- Thetford C260 toilet with 18 litre wheeled holding tank
- Inboard semi-rigid fresh water pipes Isolation taps for gas appliances
- Large bore underslung rigid waste pipes
- 25 Amp switchmode charger/transformer
- Status 530 directional Digital/Analogue TV/FM aerial and booster
- Radio/CD/MP3 player with iPod/MP3 player connection
- 25 metre mains hook-up cable
- **Safety and Security**
 - AL-KO ATC trailer stability control fitted as standard
 - AKS 3004 Stabiliser
 - Receiver for optional AL-KO Secure wheel lock
 - Smoke alarm
 - CRiS identity number etched to windows and caravan chassis
 - Concealed security data chip within caravan construction
 - High security entrance lock
 - Carbon monoxide detector
 - Passive infra-red alarm system with tilt sensor and key fob operation
 - **New** Thatcham approved tracker fitted as standard
- **Dealer-Fit Options**
 - AL-KO Secure wheel lock
 - AL-KO side lift jack
 - Wrap-around seating in addition to drawer chest
 - Coordinated bedding set for fixed bed layouts

Specifications

Make	Swift
Model	Challenger 480 SE
Internal Length	4.4m / 14'5"
External Length	6.06m / 19'11"
Width	2.25m / 7'5"
Unladen Weight	1161kg
MTPLM	1282kg
Awning Size	877cm
Warranty	3 Years