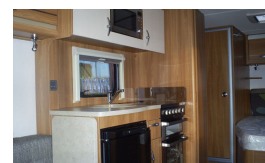


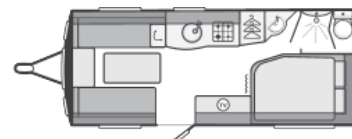
SOLD Swift Challenger Sport 514 (2014)



Overview

£17,089

Swift Challenger Sport 514 (2014)



Click the Swift logo for the Swift Challenger Sport website.



Exterior

- European Whole Vehicle Type Approval ensures compliance with strict weight, dimension and safety regulations
- EN1645 Grade 3 classification for heating and thermal insulation
- Overall body width 2.25m/7'4½"
- AL-KO galvanised steel chassis with Euro-axle
- **New** Strong, moisture proof 'PURE' Polyurethane timberless framed body shell
- One-piece, 5000 Series marine grade aluminium sidewalls
- 25mm 'sandwich' sidewall construction with polystyrene insulation core
- Aerodynamic front in closed-mould GRP with wide front door
- Full height moulded rear panel
- Fully bonded 32mm 'sandwich' roof for extra strength and flatness with polystyrene insulation core
- 44mm 'sandwich' floor with high rigidity Styrofoam core
- AL-KO Euro overrun device with two-way assisted handbrake
- Six twin spoke 'Storm' alloy wheels
- Steel spare wheel
- Higher tyre rating - a minimum of 150kg extra load margin at 130kph (law permitting)
- Shock absorbers for a smoother towing experience
- **New** Higher payload on twin axle models
- Semi-recessed body colour awning rail both sides
- Step-on hitch cover for easy cleaning of front windows
- **New** High security locks with convenient one key operation for all locks
- 13-pin 'Jaeger' 12V car connector
- Bulkhead mounted regulator suitable for use with either propane or butane bottles
- Fully double-glazed opening windows (no single-glazed cold areas)
- LED awning light
- Exterior two-part door with interior moulded liner, window and blind

- Exterior access battery box with mains electric inlet (battery not included)
- Aerial point in battery box for portable satellite dish connection
- Entrance step



Click the Smart logo for the latest design news on Swift

Interior

- 1.95m (6'5") headroom
- Panoramic front sunroof
- **New** 'Maldives' soft furnishing scheme
- 'Mali Acacia' woodgrain with rich colour and defined woodgrain texture with complementary fabrics
- Two scatter cushions
- Two bolster arms either side of front chest
- Twin curtain track for improved hanging and ease of use
- **New** Sectioned removable carpets for flexibility
- **New** French Oak effect, high impact, scratch resistant floor lino
- Beech slat seat and bed bases with sprung hinged tops for extra comfort and easy access
- Seat bases with space frame construction, full front access and space for larger items
- Bed make-up system with slats retained on track
- Sprung interior mattresses in fixed bed models
- Fixed beds with steel bed frames to maximise strength and storage space
- Areas under beds and seats warmed by blown air system and under floor ducting insulated to minimise heat loss
- Front chest of drawers with convenient slide-out extending top
- Large dining table for full-size place settings
- Positive overhead locker catches for secure storage on the move
- Overhead locker doors with injection moulded space frame construction
- Granite effect kitchen sink
- Removable drainer with dedicated storage
- Food grade nylon chopping board with dedicated storage

- Kitchen worktop extensions (except 524, 636 & 640 models)
- Cutlery drawer on smooth-action steel runners
- Two pull-out wire baskets in kitchen cupboard
- Midi-Heki roof window with flynet and adjustable concertina blind
- Door flyscreen with easy concertina action
- Cassette flyscreens and blinds on all windows
- Multi-directional clear roof lights in kitchens, bedrooms and washrooms
- Seat and backrest ventilation boards
- Retained embroidered entrance mat
- Lined washroom cubicle in all separate washrooms
- Thick washroom doors with domestic style locks and handles

Equipment

- Upgraded dual fuel heating with Truma Combi 4 Boiler 1.8kW electric/4kW gas/3.8kW combined (Combi 6 1.8kW electric/6kW gas/5.8kW combined in 544, 554, 564, 584, 586, 636, 640)
- Blown air ducted to living, sleeping and washroom areas
- Large capacity (15 litre) waste bin on lower door
- Dual fuel hob with 800W electric hotplate and 3 gas burners with electronic ignition
- Glass hob lid with safety cut-out feature
- Thetford thermostatic oven and separate grill
- Ventilated microwave oven with digital controls built at an easily accessible level
- Thetford 113ltr fridge/freezer with electronic ignition, LED controls and a black effect finish
- **New** Ecocamel shower hose and head uses less water while giving a powerful shower
- Thetford C260 toilet with electric flush and 18 litre wheeled waste tank
- High flow rate in-board pump with chrome finish brass taps for reliable, high performance water supply
- Inboard semi-rigid fresh water pipes
- Large bore under slung rigid waste pipes
- Isolation taps for gas appliances
- User-friendly large 12V control panel with battery selection, battery state meter and water pump circuit control

- Fully protected mains electric system
- 25 Amp switch mode charger/transformer
- TV station with 230V, 12V and aerial sockets (two in selected models)
- Radio/CD/MP3 player with iPod connection with upgraded premium radio speakers
- Status 550 directional Digital / Analogue TV/FM aerial and booster
- **New** 40W solar panel fitted as standard
- Low energy LED over-locker lighting in seating and bedroom areas
- Low energy LED lights in main habitation area (not washrooms)
- Four 230V sockets including twin in front shelf pod
- 25 metre mains hook-up cable

Safety and Security

- Thatcham approved TRACKER Retrieve fitted as standard
- AL-KO ATC trailer stability control fitted as standard
- AKS 3004 Stabiliser
- Receiver for optional AL-KO Secure wheel lock
- Smoke alarm
- Carbon monoxide detector
- CRiS indentity number etched to windows and caravan chassis
- Concealed security data chip within caravan construction
- **New** High security locks with convenient one key operation for all locks

Dealer-Fit Options

- Alarm system (infra-red with tilt sensor and key-fob operation)
- AL-KO Secure wheel lock
- Wrap-around seating in addition to drawer chest
- Roof-mounted air conditioner
- Supagard™ Glamour Shield paint protection

A delivery charge of £545 is subject to this model.

Specifications

| | |
|----------------------------|-------------------------|
| Make | Swift |
| Model | Challenger Sport 514 SR |
| Internal Length | 5.23m / 17'2" |
| External Length | 6.88m / 22'7" |
| Width | 2.25m / 7'5" |
| Unladen Weight | 1234kg |
| MTPLM | 1384kg |
| Awning Size | 962cm |
| Warranty External/Internal | 10 yrs / 3 yrs |